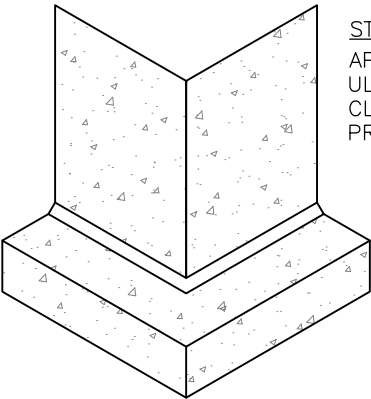
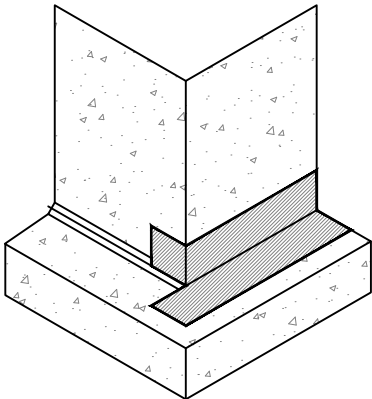


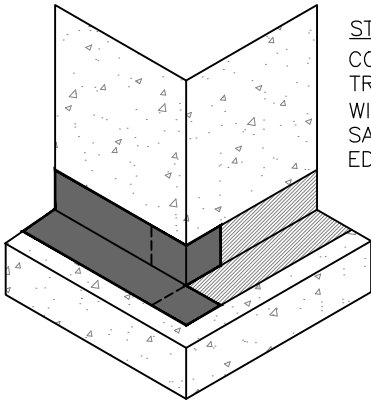
- NOTES:
1. ALL SUBSTRATES TO RECEIVE TEOBLOC SA MUST BE PRIMED WITH ULTRA-GUARD PRIMER.
 2. A 9" REINFORCING STRIP OF TEOBLOC SA IS APPLIED AT 90 DEGREE CHANGES IN PLANE.
 3. FIRMLY ROLL MEMBRANE WITH COUNTERTOP-STYLE ROLLER IMMEDIATELY AFTER INSTALLATION.
 4. SEAMS WITHIN 12" OF CHANGE-IN-PLANE MUST BE SEALED WITH ULTRA-GUARD EFS.
 5. SEE SPECIFICATIONS FOR COMPLETE REQUIREMENTS.



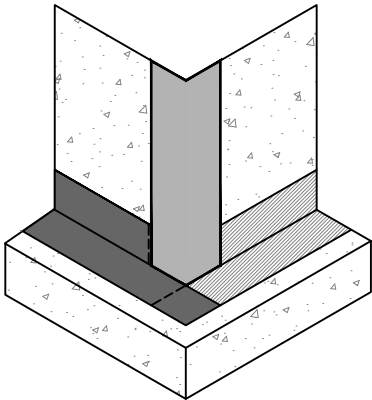
STEP 1
APPLY FILLET BEAD OF
ULTRA-GUARD EFS TO
CLEANED, PREPARED AND
PRIMED SUBSTRATE



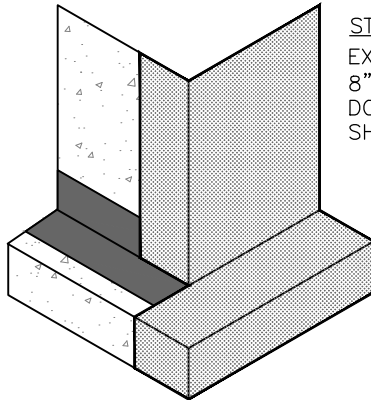
STEP 2
PRESTRIP TRANSITION AREA
AS SHOWN WITH 9" MIN.
WIDE TEOBLOC SA AROUND
OUTSIDE CORNERS



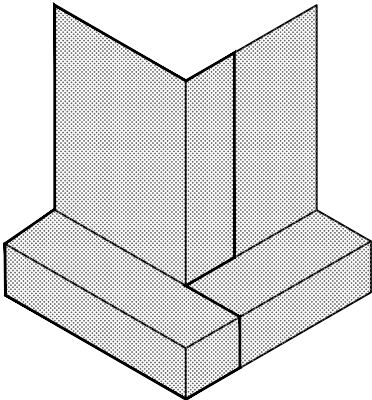
STEP 3
CONTINUE TO PRESTRIP
TRANSITION AREA AS SHOWN
WITH 9" MIN. WIDE TEOBLOC
SA AROUND CORNER. SEAL CUT
EDGES WITH ULTRA-GUARD EFS



STEP 4
APPLY 9" MIN. WIDE
TEOBLOC SA
VERTICALLY AS SHOWN
TO OUTSIDE CORNER



STEP 5
EXTEND TEOBLOC SA A MIN. OF
8" PAST OUTSIDE CORNER AND
DOWNWARD OVER FOOTING AS
SHOWN.



STEP 6
CONTINUE FIELD APPLICATION
BY APPLYING FULL WIDTH OF
TEOBLOC SA EXTENDING
DOWNWARD OVER FOOTING AS
SHOWN.

DRAWINGS ON 8 1/2"x11 TITLE BLOCKS ARE NOT TO SCALE.

TegoBloc SA			
OUTSIDE CORNER DETAIL			
		DETAIL ID: SA-04	
		REPRESENTATIVE:	
		DATE:	SHT: OF