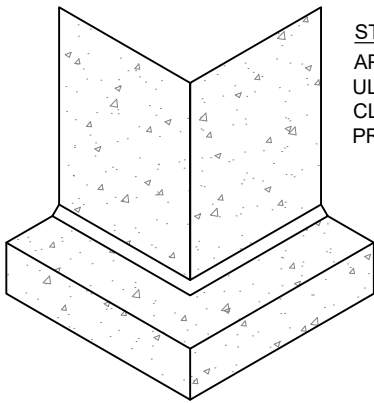
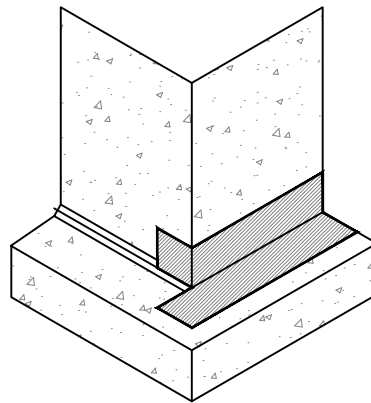


NOTES:

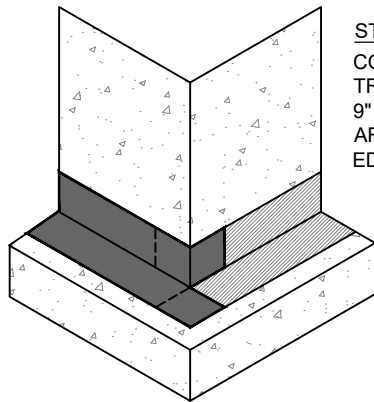
1. ALL SUBSTRATES TO RECEIVE TEOBLOC SA MUST BE PRIMED WITH ULTRA-GUARD PRIMER.
2. A 9" REINFORCING STRIP OF TEOBLOC SA IS APPLIED AT 90 DEGREE CHANGES IN PLANE.
3. FIRMLY ROLL MEMBRANE WITH COUNTERTOP-STYLE ROLLER IMMEDIATELY AFTER INSTALLATION.
4. SEAMS WITHIN 12" OF CHANGE-IN-PLANE MUST BE SEALED WITH ULTRA-GUARD EFS.
5. SEE SPECIFICATIONS FOR COMPLETE REQUIREMENTS.



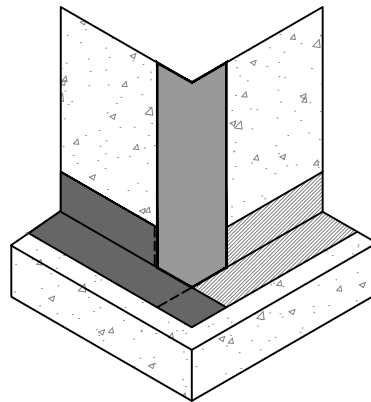
STEP 1
 APPLY FILLET BEAD OF ULTRA-GUARD EFS TO CLEANED, PREPARED AND PRIMED SUBSTRATE



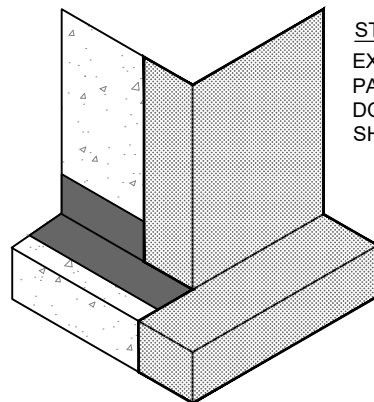
STEP 2
 PRESTRIP TRANSITION AREA AS SHOWN WITH 9" MIN. WIDE TEOBLOC SA AROUND OUTSIDE CORNERS



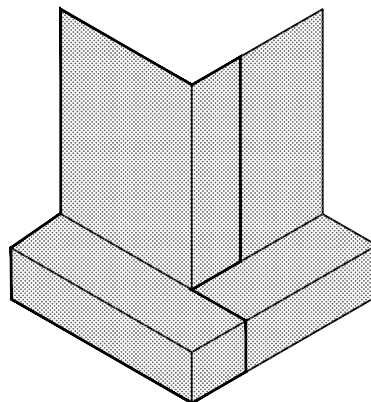
STEP 3
 CONTINUE TO PRESTRIP TRANSITION AREA AS SHOWN WITH 9" MIN. WIDE TEOBLOC SA AROUND CORNER. SEAL CUT EDGES WITH ULTRA-GUARD EFS



STEP 4
 APPLY 9" MIN. WIDE TEOBLOC SA VERTICALLY AS SHOWN TO OUTSIDE CORNER



STEP 5
 EXTEND TEOBLOC SA A MIN. OF 8" PAST OUTSIDE CORNER AND DOWNWARD OVER FOOTING AS SHOWN.



STEP 6
 CONTINUE FIELD APPLICATION BY APPLYING FULL WIDTH OF TEOBLOC SA EXTENDING DOWNWARD OVER FOOTING AS SHOWN.

DRAWINGS ON 8 1/2"x11 TITLE BLOCKS ARE NOT TO SCALE.

TegoBloc SA

OUTSIDE CORNER DETAIL



DETAIL ID:

SA-04

REPRESENTATIVE:

DATE:

SHT:

OF