

DESCRIPTION

TB-BOOTS: Waterproofing Tie-Back Head Covers

Description: TB-Boots are specialized tie-back covers designed to preserve the waterproofing integrity at soil retention tie-back heads. They consist of a single-piece, durable, pre-formed thermoplastic cover for a quick and straightforward waterproofing installation detail. Compatible with various GMX waterproofing membrane systems, including TegoBloc Swell, TegoBloc Pre-Wrap, and TegoBase Pre-Wrap EX.

Key Features:

3-Dimensional Pre-Formed Shape: Accommodates most tie-back heads installed at varied angles. Angled shape designed to displace a minimal amount of concrete.

Thick Thermoplastic Construction: Provides strength and durability to withstand concrete placement.

Size Options: Available in four sizes to accommodate various tie-back head sizes.

Applications: Ensures waterproofing integrity around soil retention tie-back heads during concrete placement.

Compatibility: Works seamlessly with GMX waterproofing membrane systems: TegoBloc Swell, TegoBloc Pre-Wrap, and TegoBase Pre-Wrap EX.

Benefits: Simplifies and expedites the waterproofing installation process. Offers a robust solution for maintaining waterproofing integrity. Designed to withstand the pressures of concrete placement.

Note: Ensure proper selection of TB-Boot size based on the specific tie-back head dimensions. Follow manufacturer guidelines for the best results.

APPLICATIONS

Installation of TB-Boot for Cable and Rod Tie-Back Heads

Compatibility: Suitable for both cable and rod-type tie-back heads.

Installation Steps:

Select Appropriate Size: Choose the correct TB-Boot size based on the dimensions of the specific tie-back head.

Pre-Installation Inspection: Ensure the tie-back head is properly installed and secured in place.

Positioning the TB-Boot: Place the pre-formed 3-dimensional TB-Boot over the tie-back head. Align the perimeter flat base of the TB-Boot with the soil retention system.

Mechanical Fastening: Mechanically fasten the TB-Boot to the soil retention system using appropriate fasteners. Ensure a secure and tight fit to prevent any water ingress.

Integration with Field Membrane: Integrate the TB-Boot with the field membrane installation. Ensure a continuous waterproofing system for challenging areas around tie-back heads.

Double-Check Installation: Verify that the TB-Boot is properly positioned and securely fastened. Confirm that there are no gaps or vulnerabilities in the waterproofing system.

Follow Manufacturer Guidelines: Adhere to the specific guidelines provided by the manufacturer for the installation of TB-Boot.

Benefits: Provides a unified and continuous waterproofing system for challenging tie-back head areas. Ensures compatibility with both cable and rod tie-back heads. Enhances the overall integrity of the waterproofing system.

Note: Follow the manufacturer's instructions and guidelines for the correct installation of TB-Boot, considering the specific requirements of the project.

INSTALLATION

Installation of TB-Boot for Tie-Back Heads

Compatibility: Suitable for tie-back plates, cables, soldier piles, strip piles, and various tie-back head types.

Installation Steps:

Select Appropriate Size TB-Boot: Choose the correct size TB-Boot to fit over the tie-back plate, ensuring proper concrete coverage as per project requirements.

Pre-Installation Inspection: Verify that the tie-back head is correctly installed and there are no irregularities.

Void Filling: Fill voids in the retention wall substrate with spray foam (minimum 20 psi) or non-shrink grout.

Drainage Composite Installation (Non-Hydrostatic

Conditions): For non-hydrostatic conditions, install and secure DrainMax drainage composite course following the manufacturer's guidelines onto the soil retention wall before TB-Boot installation.

TB-Boot Placement: Place the TB-Boot over the tie-back head, ensuring it covers the entire head without direct contact with the tie-back plate or cables.

Secure TB-Boot to Soil Retention System: Use washer head fasteners along the outside edge of the flat base to secure the TB-Boot to the soil retention system.

Apply Sealant Ring: Apply a 6 mm (1/4") thick continuous ring of LiquiSeal or Ultra-Guard EFS, at least 75 mm (3") wide, on the flat base just outside the 12 mm (1/2") raised collar.

Install TegoBloc Waterproofing Membrane: Place a 1.2 m x 1.2 m (4 ft. by 4 ft.) piece of TegoBloc waterproofing membrane over the entire flat base. Precut a hole in the center to fit tightly around the 12 mm (1/2") raised collar. Fasten the outside edges to the retaining wall using washer-head fasteners.

Secure Membrane Edge: Secure the membrane edge around the raised collar with washer-head fasteners passing through the LiquiSeal

TEGOBLOC™ TB-BOOT

7 SHEET APPLIED | Membrane Waterproofing

or EFS ring. Maintain a typical fastener spacing of 150 mm (6").

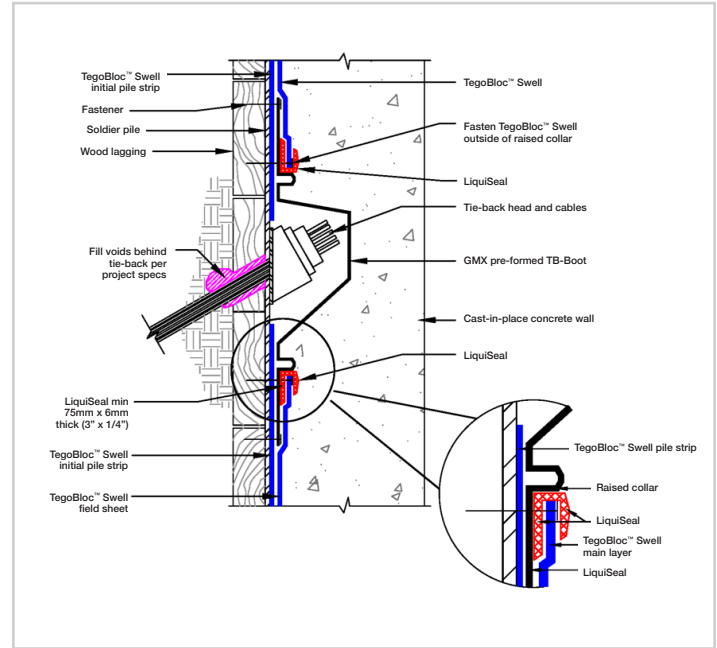
Counter Flashing: Apply counter flashing of LiquiSeal or EFS along the waterproofing membrane sheet edge around the raised collar.

Field Sheet Installation: Install the waterproofing membrane field sheet, overlapping the outer membrane edge by a minimum of 100 mm (4").

Soil Nail Rods or Rock Anchors: For soil nail rods cut within 75 mm (3") of the soil nail retention wall surface, install TB-3 following the TB-Boot installation guidelines. For smaller tie-back heads and rock anchors cut within 150 mm (6") of the soil retention wall surface, install TB-6SN per TB-Boot installation guidelines.

Note: Always follow the manufacturer's guidelines for the specific TB-Boot product and project specifications.

INSTALLATION HYDROSTATIC CONDITION



TECHNICAL DATA

TYPICAL PROPERTIES	TYPICAL VALUE			
	TB-Boot 3	TB-Boot 6	TB-Boot 8	TB-Boot 10
Overall dimensions	420 mm x 420 mm (16.5" h x 16.5" w)	640 mm x 585 mm (25.25" h x 23" w)	1 m x 0.85 m (39" h x 33.5" w)	1 m x 875 mm (38.5" h x 34.25" w)
Center preformed cavity dimensions	125 mm x 100 mm (at base) (5" h x 4" w)	215 mm x 160 mm (at base) (8.5" h x 6.25" w)	380 mm x 240 mm (at base) (15" h x 9.5" w)	530 mm x 420 mm (at base) (21" h x 16.5" w)
Maximum height of preformed cavity from soil nail retention wall	90mm (3.5")	150mm (6")	200mm (8")	250mm (10")

NON-HYDROSTATIC CONDITIONS

For non-hydrostatic conditions, install and secure DrainMax drainage composite course per GMX's guidelines to soil retention wall prior to installing TB-Boot.

NON-STANDARD INSTALLATIONS

For irregular shoring wall and tie-back head conditions not suitable for standard TB-Boot installation stated herein, please contact GMX for installation guidelines.

SHOTCRETE INSTALLATIONS

For structural shotcrete foundation walls, please contact GMX for installation guidelines.



GMX, Inc.
3014 Chamber Dr.
Monroe, NC 28110
Toll Free: 866-228-7743
www.gmxwaterproofing.com

Results may differ based upon statistical variations depending upon mixing methods and equipment, temperatures, application methods, test methods, actual site conditions and curing conditions. Installation conditions and methods can impact product performance. Consult your local GMX Sales Representative for Questions.

PRIOR TO EACH USE OF ANY GMX PRODUCT, THE USER MUST ALWAYS READ AND FOLLOW THE WARNINGS & INSTRUCTIONS ON THE PRODUCT'S MOST CURRENT PRODUCT DATA SHEET, PRODUCT LABEL AND SAFETY DATA SHEET WHICH ARE AVAILABLE ONLINE AT WWW.GMXCO.COM OR BY CALLING GMX AT 866-228-7743. NOTHING CONTAINED IN ANY GMX MATERIALS RELIEVES THE USER OF THE OBLIGATION TO READ AND FOLLOW THE WARNINGS AND INSTRUCTIONS FOR EACH GMX PRODUCT AS SET FORTH IN THE CURRENT PRODUCT DATA SHEET, PRODUCT LABEL AND SAFETY DATA SHEET PRIOR TO PRODUCT USE.