

PRODUCT DESCRIPTION

TruDryXG™ is a polymer modified asphalt emulsion membrane developed for use as a high quality below grade waterproofing barrier. TruDryXG's low vapor permeance, outstanding adhesion, and superior combination of hardness and flexibility make it a great choice for any below grade waterproofing application. TruDryXG™ is an air cure membrane that will be fully cured in 24 hours. It can be used in conjunction with many types of protection/drainage boards to achieve the best system for your specific applications.

The addition of rubber polymer to the base emulsion enables the membrane to:

- Elongate up to 2000%
- Bridge shrinkage cracks (up to 1/16")
- Control water migration between the coating and application surface(localize leaks)
- Impede water at high heads due to improved water vapor permeance
- Comply with EPA Model Standard for radon control in new home construction
- Self-heal

TruDryXG™ is manufactured to the highest quality control standards and in accordance with ISO 9001 requirements. ISO certification ensures that each gallon produced meets the highest quality control standards in the industry.

TruDryXG™ is compatible with a wide range of insulation, drainage and protection products. Your applicator can design the waterproofing solutions best suited to each project's specific application requirements and budgetary constraints.

INSTALLATION

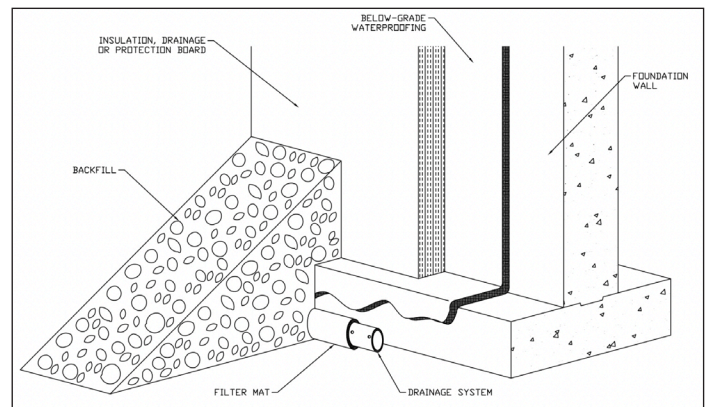
Preparatory Work: The walls and footings must be dry and of sufficient strength and design to ensure structural integrity. Concrete wall and mortar joints must cure a minimum 16 hours before TruDryXG™ is applied. Foundation design using concrete blocks should fall within guidelines established by the National Concrete Masonry Association and be acceptable to the local building code enforcement agency.

Remove dirt and debris from the walls and footings with a stiff brush or broom. Scrape any loose mortar and debris from the walls and footings with a metal scraper. Do not apply TruDryXG™ over standing water. Repair any cracks in excess of 1/16" along the footings or in the wall surface and all honeycombed areas with a non shrinking grout. Fill all voids around tie holes, recessed ties and other small voids with an acceptable fiber reinforced asphalt roofing cement or cementitious repair material.

Membrane Installation: After the wall and footing surfaces have been properly prepared, spray, roller or brush apply TruDryXG™ over the entire wall surface (to the designated grade line) and along the perimeter. Particular emphasis should be paid to wall joints and the joint between the walls and footings. TruDryXG™ is applied at a rate of 20–25 sq. ft. per gallon. A two pass application is generally recommended to ensure sufficient dry mil thickness

without excessive running or puddling. Thicker application(s) can be applied to meet individual project specifications. Please contact your GMX representative for instructions on applying thicker applications. To ensure a smooth, consistent spray pattern, warm the material to 100–130°F immediately prior to spraying.

Protection, drainage or insulation board is typically installed over TruDryXG™ to protect the membrane from damage by the backfill, to assist in draining water away from the foundation and/or to insulate the foundation wall. The insulation/protection course is not required by code in residential applications. It is recommended for commercial waterproofing applications. TruDryXG™ is compatible with a wide range of insulation and protection boards including, but not limited to rigid fiberglass insulation/protection board, extruded polystyrene insulation and sheet drain materials. Any question regarding the compatibility of TruDryXG™ with a specific insulation/



protection board or drainage board should be directed to the GMX representative. Drain tile or strip drain must be installed as per the manufacturer's instructions to ensure proper removal of water from the foundation walls and footings. Backfill must be graded to direct surface water away from the exterior foundation walls.

Additional Procedures for Poured Concrete Walls: TruDryXG™ can be applied immediately after the forms have been removed. Remove wall ties prior to application. Fill any large voids and tie holes with a non-shrinking grout or asphalt based cement. Do not apply TruDryXG to frozen concrete.

Additional Procedures for Concrete Block Walls: Mortar joints must be made flush to provide a void free bonding surface. TruDryXG™ will adhere to both parged and unparged concrete block walls. Due to the porous nature of unparged concrete block walls, additional material may be required to achieve the specified dry mil thickness. The mortar must be Type M or Type S as specified by ASTM C-270-91 a (Specification for Mortar for Unit Masonry, ASTM Vol. 04.01 and 04.05). Allow the mortar joints to cure a minimum 16 hours prior to applying waterproofing.

Spray Equipment Recommendations: Gasoline powered, airless spray units with a minimum 4,000 p.s.i. rating will effectively spray any TruDry waterproofing product. For efficient spraying, use a heat exchanger to warm product to 100–130°F immediately prior to spraying. A reverse-a-clean spray tip with an orifice between

.029 and .035 is recommended for spraying TruDryXG™. Most spray systems utilize 150' of hose. Use ½ inch, 5,400 p.s.i. rated hose for the first 100 feet. Use 3/8 inch, 4,700 p.s.i. rated hose for the next 50 feet. A 4 foot, ¼ inch whip line is used immediately before the spray gun to facilitate spraying. Do not mix water and solvent based materials in the hose lines. Clean lines with mineral spirits before switching materials. Clean spray equipment with mineral spirits.

STORAGE & HANDLING

Store materials in a dry area and protect from direct sunlight. Ideally, the materials should be stored inside in a temperature controlled environment (interior temperatures between 60–80°F). Do not allow TruDryXG™ to freeze. Any materials exposed to the elements should be elevated above the ground and covered by a tarpaulin. Materials should not be exposed to excessive heat or direct flame.

TruDryXG™ should not be applied during inclement weather and the installation should not proceed in the event that precipitation is probable during the application. Consult your GMX representative for application recommendations when application temperatures are less than 20°F. Avoid inhaling the spray mist and take precautions to ensure adequate ventilation. Consult the product SDS prior to spraying.

WARRANTY

HouseGuard warrants its material for 10 years and its system applications for a period of up to 30 years provided our materials are applied in accordance with the published specifications in effect at the time of installation. For specific warranty terms and conditions, contact your local representative.

TECHNICAL SERVICES | PRODUCT SPECIFICATIONS Type: Polymer modified asphalt waterproofing membrane

Color:	Black
Solids:	62% +/- 5 (by weight)
Density:	8.4 lbs./gal (1.0 g/cu. cm)
Application:	Airless spray, brush, roller
Cure Time:	2 – 24 hours
Hydrostatic Pressure:	Meets AC 29 requirement over Cracks (ASTM C 1306) for pressure resistance.
Low-Temperature Flexibility: (ASTM C 836 @ - 26 C.)	Meets AC 29 requirement. No cracking or loss of and Crack Bridging adhesion.
Adhesion Strength to Poured Cement:	2.469 lbf/in. ASTM C 836, Meets AC 29 requirement. Section 6.10
Adhesion Strength to Unparged Masonry:	1.855 lbf/in. Meets AC 29 requirement. ASTM C 836, Section 6.10
Resistance to Water: (ASTM D 2939, Section 15)	No blistering or re-emulsification. Meets AC 29 requirement.

Remains in Place During Application:	Meets AC 29 requirement.
Water Vapor Permeance:	.29 perms ASTM E 96, Water Method
Extensibility after Heat Aging: (ASTM C 836, Section 6.12)	¼" No Cracking Meets AC 29 requirement.
Elongation: (ASTM D 412, die c)	1936% min.
Cure Time	12 – 24 hours.

SHIPPING INFORMATION

Proper Shipping Name:	Non-regulated material Waterbased asphalt emulsion
Hazard Class:	Not Applicable
Identification:	Not Applicable
Packaging Group:	Not Applicable

NOTE: Applies to DOT-U.S./ MOT-CANADA/INT'L (ALL MODES).

CAUTION: TruDry™ XG is a water-based material.
KEEP FROM FREEZING DURING TRANSIT AND STORAGE

May help to contribute to LEED® credits:

EA Credit 1:	Optimize Energy Performance
EQ Credit 3.1:	Construction IAQ Management Plan: During Construction
EQ Credit 4.2:	Low Emitting Materials: Paints and Coatings
MR Credit 5.1:	Regional Materials: 10% Extracted, Processed and Manufactured Regionally
MR Credit 5.2:	Regional Materials: 20% Extracted, Processed and Manufactured Regionally



GMX, Inc.
3014 Chamber Dr.
Monroe, NC 28110
Toll Free: 866-228-7743
www.gmxwaterproofing.com

Results may differ based upon statistical variations depending upon mixing methods and equipment, temperatures, application methods, test methods, actual site conditions and curing conditions. Installation conditions and methods can impact product performance. Consult your local GMX Sales Representative for Questions.

PRIOR TO EACH USE OF ANY GMX PRODUCT, THE USER MUST ALWAYS READ AND FOLLOW THE WARNINGS & INSTRUCTIONS ON THE PRODUCT'S MOST CURRENT PRODUCT DATA SHEET, PRODUCT LABEL AND SAFETY DATA SHEET WHICH ARE AVAILABLE ONLINE AT WWW.GMXCO.COM OR BY CALLING GMX AT 866-228-7743. NOTHING CONTAINED IN ANY GMX MATERIALS RELIEVES THE USER OF THE OBLIGATION TO READ AND FOLLOW THE WARNINGS AND INSTRUCTIONS FOR EACH GMX PRODUCT AS SET FORTH IN THE CURRENT PRODUCT DATA SHEET, PRODUCT LABEL AND SAFETY DATA SHEET PRIOR TO PRODUCT USE.