

### PRODUCT DESCRIPTION

Ultra-Shield WB Platinum Waterproofing is a polymer modified asphalt emulsion membrane. It is designed and recommended for use as the membrane component in an exterior wall waterproofing system. Ultra-Shield WB Platinum forms a tough, durable membrane which bridges shrinkage cracks and maintains its superior performance properties when exposed to the chemicals found in soil. Ultra-Shield WB Platinum meets the ICC ESR acceptance criteria for cold, liquid applied below grade exterior waterproofing materials.

The addition of rubber polymer to the base emulsion enables the membrane to:

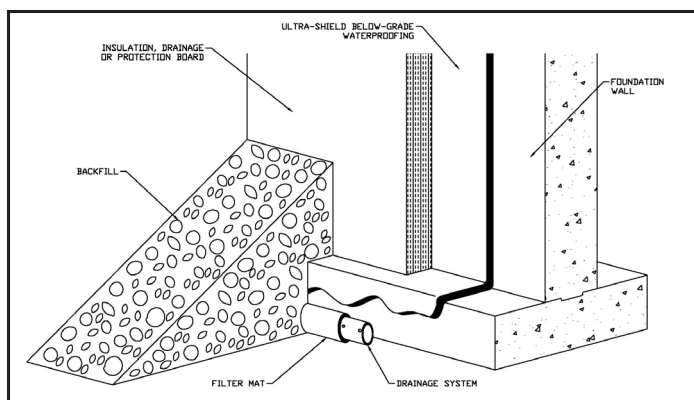
- Elongate up to 2000%
- Bridge shrinkage cracks (up to 1/16")
- Control water migration between the coating and application surface (localize leaks)
- Impede water at high heads due to improved water vapor permeance
- Comply with EPA Model Standard for radon control in new home construction
- Self-heal

Ultra-Shield WB Platinum is manufactured to the highest quality control standards and in accordance with ISO 9001 requirements. ISO certification ensures that each gallon produced meets the highest quality control standards in the industry.

Ultra-Shield WB Platinum is compatible with a wide range of insulation, drainage and protection products. Your applicator can design the waterproofing solutions best suited to each project's specific application requirements and budgetary constraints.

**Storage and Handling Considerations:** Store materials in a dry area and protect from direct sunlight. Ideally, the materials should be stored inside in a temperature controlled environment (interior temperatures between 60–80°F). Do not allow Ultra-Shield WB Platinum to freeze. Any materials exposed to the elements should be elevated above the ground and covered by a tarpaulin. Materials should not be exposed to excessive heat or direct flame.

Store waterproofing materials at room temperature until immediately prior to use when the ambient temperature is less than 40°F. Discontinue application if the material can not be stored at temperatures which permit even distribution of product. Avoid



inhaling the spray mist and take precautions to ensure adequate ventilation. Consult the product SDS Sheet prior to spraying.

### INSTALLATION

**Preparatory Work:** The walls and footings must be dry and of sufficient strength and design to ensure structural integrity. Concrete wall and mortar joints must cure a minimum 16 hours before Ultra-Shield WB Platinum is applied. Foundation design using concrete blocks should fall within guidelines established by the National Concrete Masonry Association and be acceptable to the local building code enforcement agency.

Remove dirt and debris from the walls and footings with a stiff brush or broom. Scrape any loose mortar and debris from the walls and footings with a metal scraper. Do not apply Ultra-Shield WB Platinum over standing water. Repair any cracks in excess of 1/16" along the footings or in the wall surface and all honeycombed areas with a non shrinking grout. Fill all voids around tie holes, recessed ties and other small voids with an acceptable fiber reinforced asphalt roofing cement or cementitious repair material.

**Membrane Installation:** After the wall and footing surfaces have been properly prepared, spray, roller or brush apply Ultra-Shield WB Platinum over the entire wall surface (to the designated grade line) and along the perimeter. Particular emphasis should be paid to wall joints and the joint between the walls and footings. Ultra-Shield WB Platinum is applied at a rate of 20–25 sq. ft. per gallon (required minimum 60 mils wet, 40 mils dry) in residential applications and to the specified rate in commercial applications.

Protection, drainage or insulation board is typically installed over Ultra-Shield WB Platinum to protect the membrane from damage by the backfill, to assist in drainage and/or to insulate the foundation wall. Protection Board is not required by code in most situations however it is recommended to improve the overall performance of the system. Ultra-Shield WB Platinum is compatible with a wide range of boards including but not limited to, rigid fiberglass, composite sheet drain, synthetic fiber boards and others. Ultra-Shield WB Platinum is chemically compatible with polystyrene foam insulation but we urge caution with its use\*. Any question regarding the compatibility of Ultra-Shield WB Platinum with a specific insulation/protection or drainage board should be directed to the GMX Technical Department.

Drain tile or strip drain must be installed as per the manufacturer's instructions to ensure proper removal of water from the foundation walls and footings. Backfill must be graded to direct surface water away from the exterior foundation walls.

**Atmospheric Condition Restrictions:** Ultra-Shield WB Platinum should not be applied during inclement weather and the installation should not proceed in the event that precipitation is probable during the application. Consult your local GMX representative or the GMX Technical Department for application recommendations when application temperatures are less than 15°F. When the ambient temperature is below freezing the wall should be free from snow, ice, frost or any frozen moisture as this will prevent proper adhesion. Please be aware that Ultra-Shield WB Platinum cannot freeze before it is in place on the substrate wall.

# ULTRA-SHIELD WB PLATINUM



7 FLUID APPLIED | Membrane Waterproofing

RESIDENTIAL

**Additional Procedures for Poured Concrete Walls:** Ultra Shield WB Platinum can be applied immediately after the forms have been removed. Remove wall ties prior to application. Fill any large voids and tie holes with a non-shrinking grout or asphalt based cement. Do not apply Ultra Shield WB Platinum to frozen concrete.

**Additional Procedures for Concrete Block Walls:** Mortar joints must be made flush to provide a void free bonding surface. Ultra-Shield WB Platinum will adhere to both parged and unparged concrete block walls. Due to the porous nature of unparged concrete block walls, additional material may be required to achieve the specified dry mil thickness. The mortar must be Type M or Type S as specified by ASTM C-270-91 a (Specification for Mortar for Unit Masonry, ASTM Vol. 04.01 and 04.05). Allow the mortar joints to cure a minimum 16 hours prior to applying waterproofing.

**Spray Equipment Recommendations:** Gasoline powered, airless spray units with a minimum 4,000 p.s.i. rating will effectively spray any Ultra-Shield waterproofing product. For efficient spraying, use a heat exchanger to warm product to 100–130°F immediately prior to spraying. A reverse-a-clean spray tip with an orifice between .029 and .035 is recommended for spraying Ultra-Shield WB Platinum. Most spray systems utilize 150' of hose. Use ½ inch, 5,400 p.s.i. rated hose for the first 100 feet. Use 3/8 inch, 4,700 p.s.i. rated hose for the next 50 feet. A 4 foot, ¼ inch whip line is used immediately before the spray gun to facilitate spraying. Do not mix water and solvent based materials in the hose lines. Clean lines with mineral spirits before switching materials. Clean spray equipment with mineral spirits.

## AVAILABILITY AND COST

GMX materials are produced in and shipped from our plant in Monroe, NC. For the name and number of the nearest GMX representative, call us at 866-228-7743.

## WARRANTY

GMX may offer warranties up to 30 years for its membranes and system applications when they are installed by a Certified GMX installer in accordance with the published specifications in effect at the time of installation. For specific warranty terms and conditions, contact your local GMX representative or the Monroe, NC office.

## TECHNICAL SERVICES

Your local GMX representative is available to assist you in selecting the appropriate product and to provide on-site application assistance. For further information, please contact our Technical Service Dept. at 866-228-7743.

## TECHNICAL SERVICES | PRODUCT SPECIFICATIONS

Type: Polymer modified asphalt waterproofing membrane

<b>Color:</b>	Black
<b>Solids:</b>	62% +/- 5 (by weight)
<b>Density:</b>	8.4 lbs./gal (1.0 g/cu. cm)
<b>Application:</b>	Airless spray, brush, roller
<b>Cure Time:</b>	12 – 24 hours
<b>Hydrostatic Pressure:</b>	Meets AC 29 requirement over Cracks (ASTM C 1306) for pressure resistance.
<b>Low-Temperature Flexibility:</b> (ASTM C 836 @ - 26 C.)	Meets AC 29 requirement. No cracking or loss of and Crack Bridging adhesion.
<b>Adhesion Strength Poured Cement:</b> (ASTM C 836, Section 6.10)	2.469 lbf/in. Meets AC 29 requirement.
<b>Adhesion Strength Unparged Masonry:</b> (ASTM C 836, Section 6.10)	1.855 lbf/in. Meets AC 29 requirement.
<b>Resistance to Water:</b> (ASTM D 2939, Section 15)	No blistering or re-emulsification. Meets AC 29 requirement.
<b>Remains in Place During Application:</b>	Meets AC 29 requirement
<b>Water Vapor Permeance:</b>	.29 perms ASTM E 96, Water Method
<b>Extensibility after Heat Aging:</b> (ASTM C 836, Section 6.12)	¼" No Cracking Meets AC 29 requirement
<b>Elongation:</b> (ASTM D 412, die c)	Greater Than 1900%

**CAUTION:** Ultra-Shield WB Platinum is a water-based material. KEEP FROM FREEZING DURING TRANSIT AND STORAGE.

## May help to contribute to LEED® credits:

<b>EA Credit 1:</b>	Optimize Energy Performance
<b>EQ Credit 3.1:</b>	Construction IAQ Management Plan: During Construction
<b>EQ Credit 4.2:</b>	Low Emitting Materials: Paints and Coatings
<b>MR Credit 5.1:</b>	Regional Materials: 10% Extracted, Processed and Manufactured Regionally
<b>MR Credit 5.2:</b>	Regional Materials: 20% Extracted, Processed and Manufactured Regionally



PLATINUM

**GMX, Inc.**  
3014 Chamber Dr.  
Monroe, NC 28110  
Toll Free: 866-228-7743  
[www.gmxwaterproofing.com](http://www.gmxwaterproofing.com)

LEED® Buildings and Leadership in Energy and Environmental Design® are trademarks of the U.S. Green Building Council. The Leadership in Energy and Environmental Design (LEED) Green Building Rating System is a voluntary, consensus-building national standard that was initiated by the U.S. Green Building Council (USGBC) for developing high-performance sustainable buildings.

022822